



Maintenance Action Team (MAT) Overview

BACKGROUND

The National Park Service (NPS) Maintenance Action Team (MAT) program was established in FY21 as part of the Legacy Restoration Fund (LRF) to address projects at small and medium-sized parks which had not yet benefitted from Great American Outdoors Act (GAOA) funding.

MATs are in specific regional areas with proximity to multiple park units and improve our ability to implement long range preservation maintenance plans. FY21 MATs focused on cultural assets. FY23 MATs will expand to non-historic assets, Youth Corps, and National Cemeteries.

The MAT program consists of skilled tradespeople who train and complement traditional park facility crews. The teams are geographically dispersed but have a home-base which allows for:

- scalability
- additional project delivery options
- cost savings
- greater opportunities for training of employees.



MATs accomplish high priority deferred maintenance & repairs (DM&R) projects to reduce the backlog and keep primary resources in acceptable condition.

The program delivers an opportunity to enhance NPS asset management through any available fund source.

MATs create operational savings and reduce the total cost of facility ownership (TCFO) while also enhancing NPS' preventative and recurring maintenance capacity and capabilities.

BENEFITS

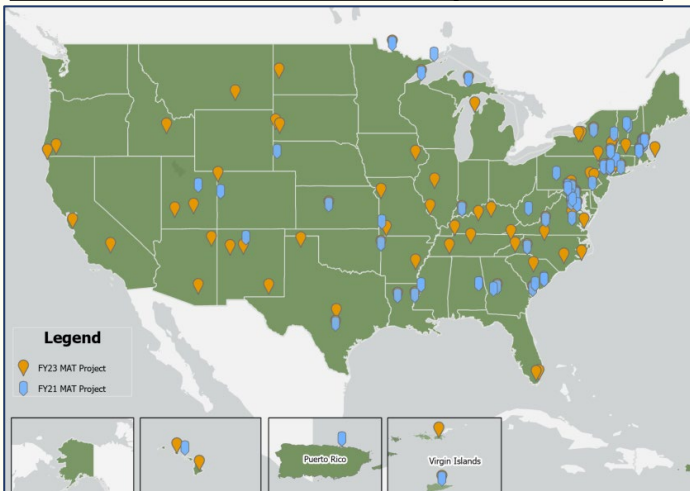
OPPORTUNITIES

Historic Preservation Training Center's (HPTC) Diversity Engagement Coordinator will work with the national and regional MAT programs to proactively engage veterans, under-represented, and youth communities in preservation and facilities occupation opportunities across the agency.

The program provides a unique opportunity for philanthropic partnership development at small and medium parks increasing the capacity and reach of MATs throughout the park system.



FY21/FY23 MAT Team Activity Distribution



In FY21, NPS dedicated \$14.1M from the FY21 LRF program across 78 total projects to address deferred maintenance in 31 states, plus 3 districts/territories.

To date, more than 20 of these projects have been successfully completed (*see reverse for project details*).

The FY23 MAT program is in the final stages of development as of Q1 FY23 and includes more than 120 projects in 93 unique parks across 39 states.

IMPACTS TO DATE



Maintenance Action Team (MAT) In Action

PARAMETERS

The MAT program focuses on projects sites located in small to medium-sized parks with supportive park management, projects are ready to execute, and minimal NEPA/NHPA compliance is required.

MAT projects should have an accurate scope with a cost estimate less than \$250k (ideally ranging between \$125k to \$175k).

Project work can be completed in a short timeframe with small staff day-labor crews who have a mix of skills and experience.

Historic Architecture Conservation & Engineering (HACE) Center Project Highlights

As of FY23, the teams have completed six HACE projects. The following three are spotlighted below:



Morristown National Historical Park

Rehabilitate Jockey Hollow Bridge #2

The HACE MAT, with assistance from students from Mather High School, rehabilitated the Jockey Hollow Bridge #2 including the structural frame, planking, and abutments.

This project extended the life of critical systems and corrected deferred maintenance.

Fire Island National Seashore

Stabilization of Old Mastic House at William Floyd Estate



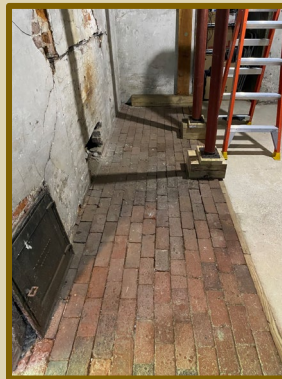
This project corrected significant critical deferred maintenance and repair issues at the Old Mastic House at William Floyd Estate.

The work included the rehabilitation of plaster surfaces in the Old Dining Room and Gun Room. It also addressed structural supports in the basement.



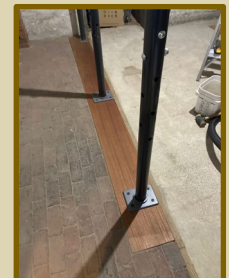
Longfellow House-Washington's Headquarters National Historic Site

Reinforce Longfellow Basement Structural Support



This project was maintained necessary structural integrity of a historic beam that had developed a longitudinal split.

These improvements resulted in a more stable floor structure.



SUCCESSSES

OUTLOOKS

The NPS plans to dedicate \$20M from the FY23 LRF program to MATs.

As of Q1 FY23, 52% of FY21 MAT funds have been expended. Regional MAT Coordinators have been hired and final project scoping is underway for the FY23 MAT projects.

NPS and the Fish and Wildlife Service (FWS) have met to discuss opportunities for cooperative MAT training and certifications. In FY23, the agencies aim to determine projects and sites that can support these collaborative efforts.