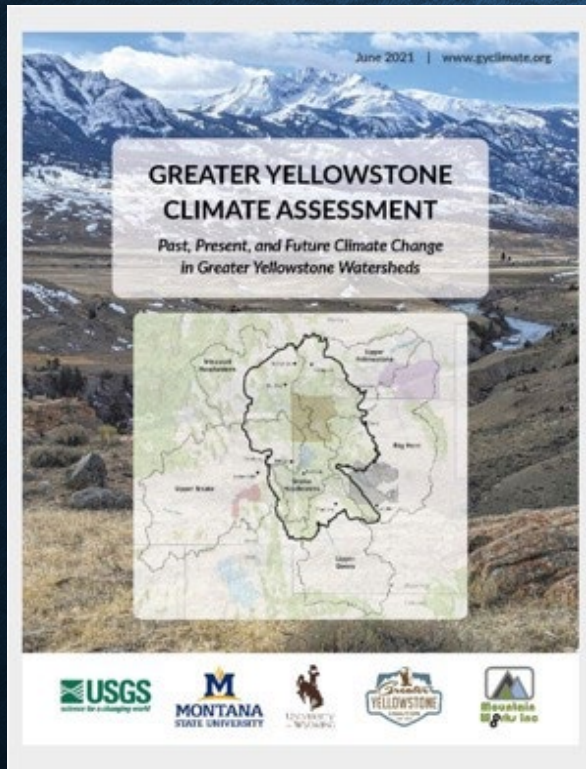


# NATIONAL PARK HOSPITALITY ASSOCIATION

## GRAND TETON CLIMATE CHANGE & SUSTAINABILITY



Chip Jenkins  
Superintendent  
Grand Teton National Park  
John D. Rockefeller, Jr. Memorial Parkway

# RESPONDING TO CLIMATE CHANGE

Science and Research

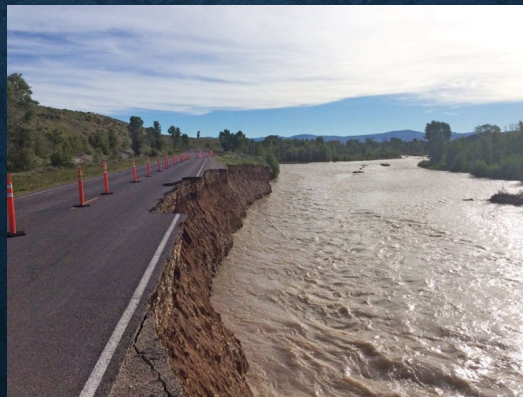
Scenario Planning

Adaptation Steps

Increasing Ecosystem Resiliency

Increasing Infrastructure Resiliency

Recognizes Change in operations (including visitation)



# 2022 GREEN PARKS PLAN

## Be Climate Friendly and Climate Ready

The NPS will combat the climate crisis by achieving net zero GHG emissions.

## Be Energy Smart and Water Wise

The NPS will achieve net zero water use and net zero energy for facilities and operations.

## Buy Green, Reduce, Reuse, Recycle

The NPS will achieve net zero waste and sustainable procurement.

## Green Our Rides

The NPS will transition our fleet to zero-emissions vehicles and adopt and support greener transportation methods.

## Promote Healthy Engagement

The NPS will foster healthy outdoor experiences for all.

## Foster a Sustainability Ethic

The NPS will engage its workforce, visitors, stakeholders and communities to support sustainability, climate resilience, and environmental justice, and invite their participation.

# BE ENERGY SMART AND WATER WISE



Green Power



Green Building



Infrastructure Upgrades

# GREEN OUR RIDES



## Grand Teton National Park Federal Fleet Tiger Team EVSE Site Assessment

Leidy Boyce, Jesse Bennett, and Ranjit Desai

National Renewable Energy Laboratory



NREL is a national laboratory of the U.S. Department of Energy  
Office of Energy Efficiency & Renewable Energy  
Operated by the Alliance for Sustainable Energy, LLC

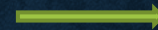
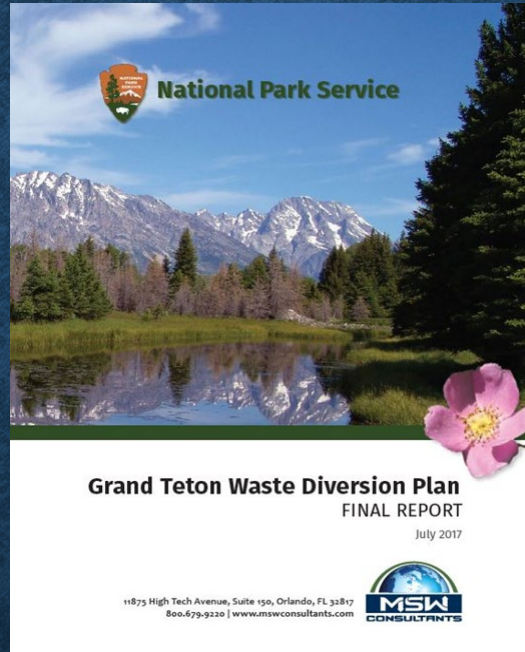
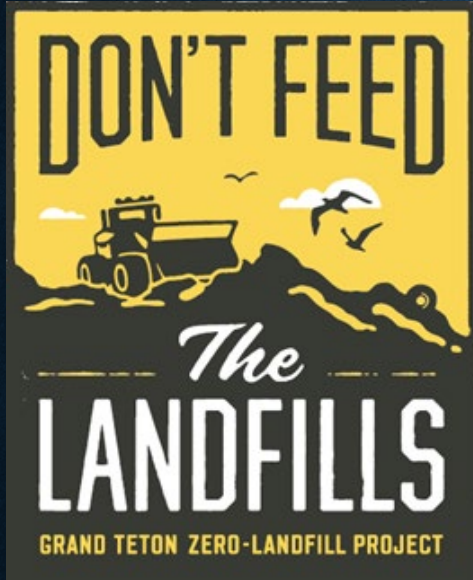
This report is available at no cost from the National Renewable Energy  
Laboratory (NREL) at [www.nrel.gov/publications](http://www.nrel.gov/publications).

Contract No. DE-AC36-08GO28308

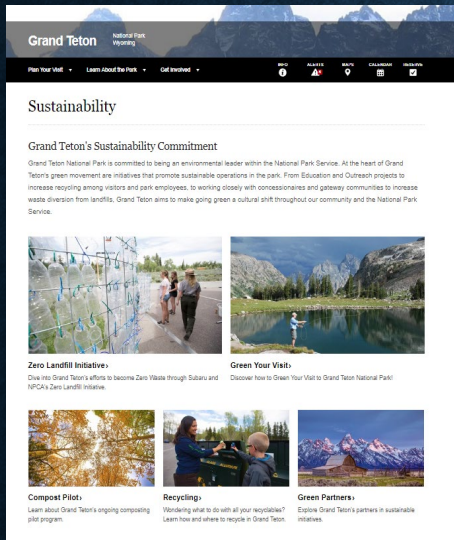
Technical Report  
NREL/TP-5400-83250  
August 2022



# BUY GREEN, REDUCE, REUSE, RECYCLE



# PROMOTE HEALTHY ENGAGEMENT



Pre-Trip Planning



Youth



Tribal Engagement



Community



Employees



Partners

# QUESTIONS?

